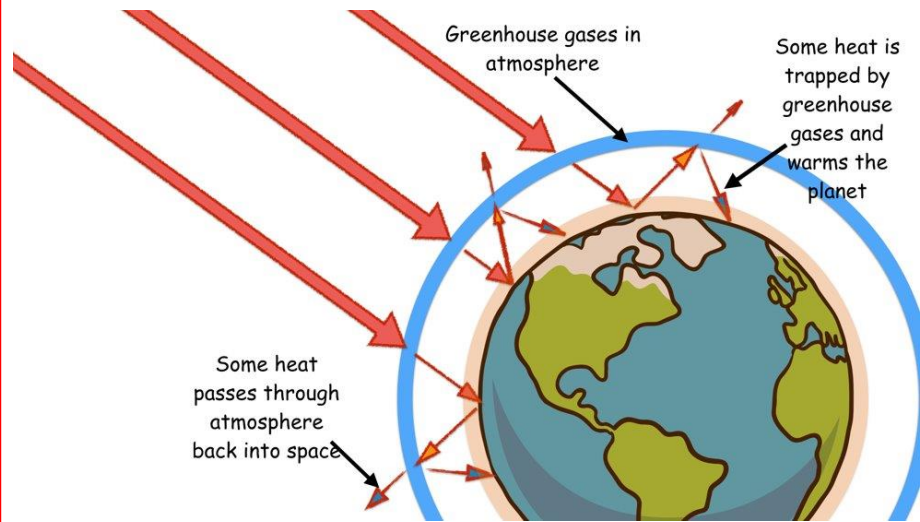


Bury Rangers, Better Planet Schools - Energy Saving, Buzzards,

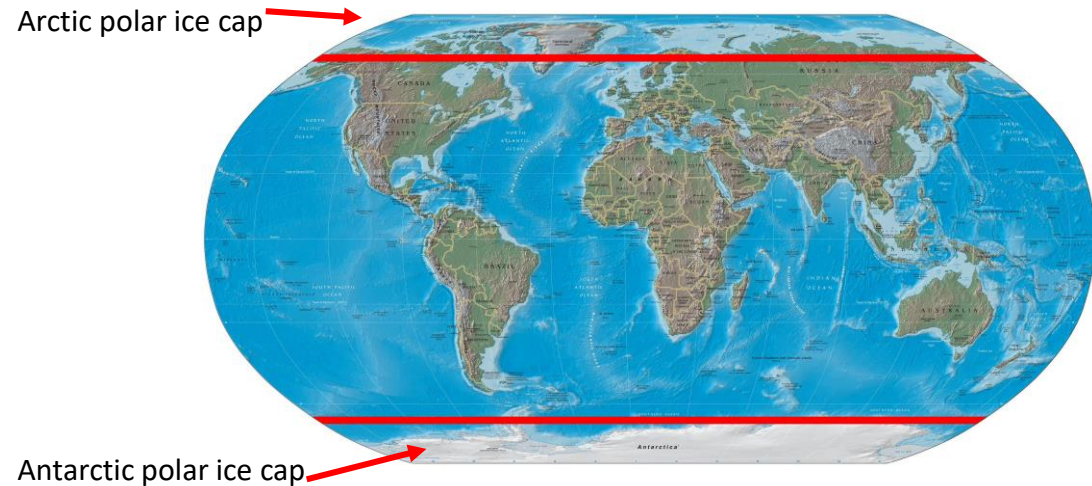
Key Vocabulary

| | |
|-------------------|--|
| carbon dioxide | Carbon dioxide is a molecule that contains two oxygen atoms and one carbon atom. Carbon dioxide is produced from breathing and from burning certain substances called fossil fuels. |
| climate change | Changes in the Earth's long-term weather patterns. |
| electricity | The flow of electrical power or charge. It is a secondary energy source which means that we get it from the conversion of other sources of energy e.g. coal, natural gas, oil and natural sources. |
| energy | Usable power that comes from heat, electricity etc. |
| fossil fuels | A fuel (such as coal, oil, or natural gas) formed in the Earth from plant or animal remains from millions of years ago. |
| greenhouse effect | When warmth from the sun is trapped in the Earth's atmosphere by gases (such as carbon dioxide and methane), leading to the warming of the Earth's surface and the air above it. |
| renewable energy | Energy made by harnessing energy found in nature, like wind, water and sunshine. They will not run out. |
| pollution | When the environment is contaminated, or dirtied, by waste, chemicals, and other harmful substances. |
| watt | The unit that we measure electrical energy in. |

The greenhouse effect



Where are the polar ice caps?



Tier 2 vocabulary

environment

The surroundings or conditions in which a person, animal, or plant lives

Fossil fuels like coal, oil and gas are burned to make energy in power stations. This pollutes the environment.



Burning fossil fuels causes climate change like flooding, storms and making the temperature of the earth increase which means the polar ice caps melt.



Using renewable energy sources like wind, waves and water (hydroelectric) and the sun (solar).

