

Science— Animals inc. Humans (Teeth and Digestion)

Key Vocabulary

canine	Pointed teeth near the front of the mouth that are used for tearing.
incisor	The teeth at the front of your mouth which you use for biting into food.
intestine	The tubes in your body through which food passes when it has left your stomach.
molar	The large, flat teeth towards the back of your mouth that you use for chewing food.
oesophagus	The part of your body that carries the food from the throat to the stomach.
predator	An animal that kills and eats other animals.
pre molar	The teeth situated before molar teeth
prey	A creature's prey are the creatures that it hunts and eats in order to live.
producer	A plant or organism that makes its own food using energy from the sun.
stomach	The organ inside your body where food is digested before it moves into the intestines.
tongue	The soft movable muscle inside your mouth which you use for tasting, eating, and speaking.

Key Facts

The digestive system is the system in the body that deals with food.

The digestive system is made up of the mouth (teeth, saliva and tongue), oesophagus, stomach, small intestines, large intestine, rectum and anus.

Food is broken down into smaller chunks in the mouth.

The stomach contains acid which breaks food down even further.

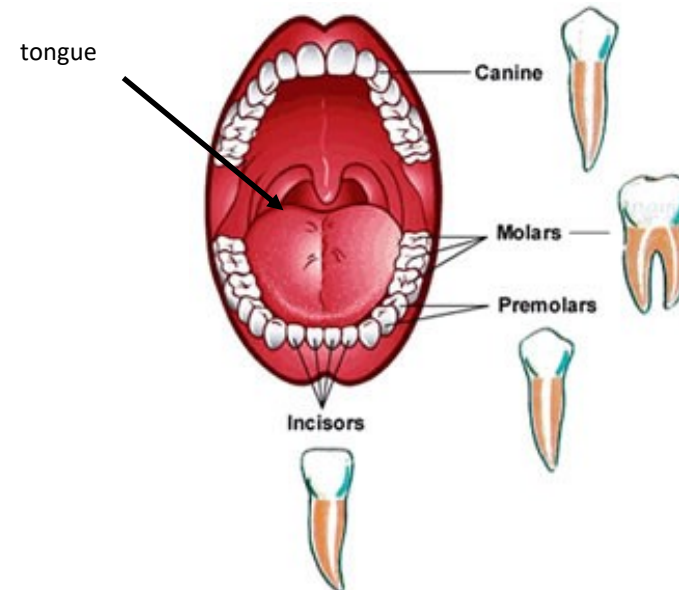
Everything we need from food is absorbed through the intestines. Waste is removed from the body via the anus.

The teeth of an animal are designed to eat different foods depending on the diet of the animal.

Too much sugar can cause tooth decay. We must brush our teeth twice per day.

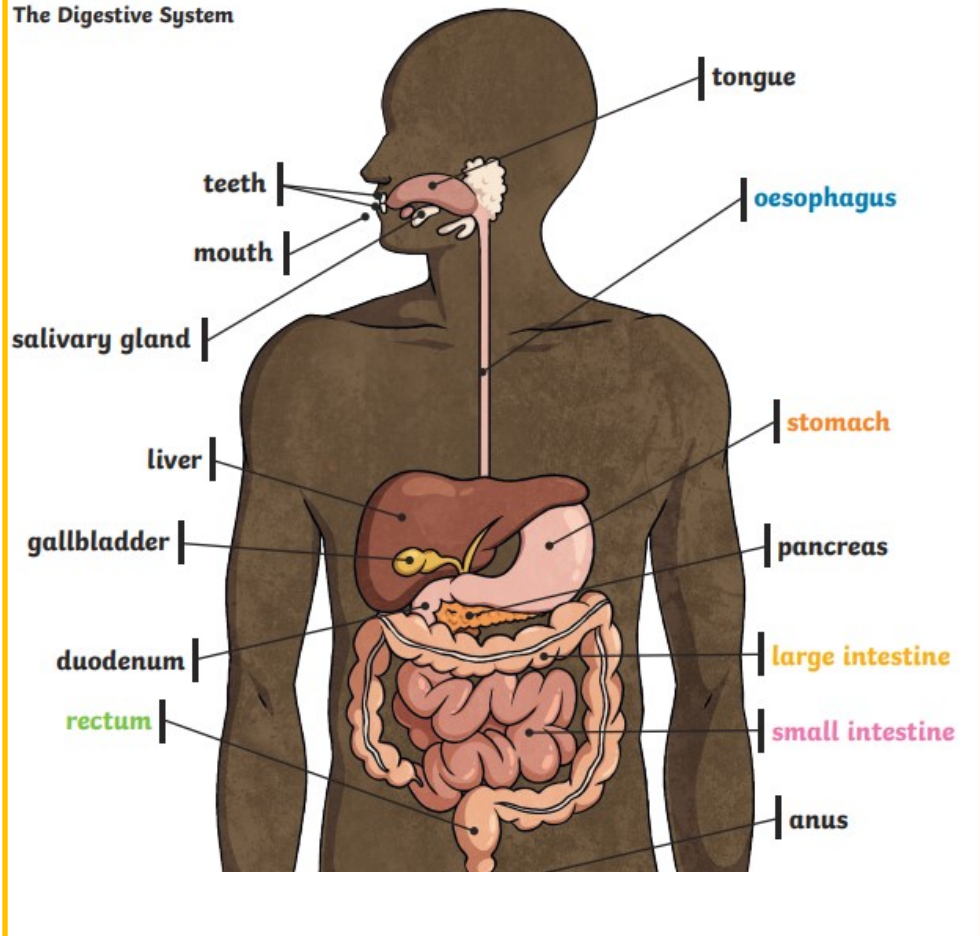
A food chain shows the chain of living things which rely on each other for food.

Diagram of our mouth



The Digestive System Diagram

The Digestive System



Tier 2 Vocabulary

benefit	Something good that can happen as a result of something else.
contribute	Saying or doing things to help.
diverse	A wide variety of things
environment	Surroundings or conditions in which a person, animal, or plant lives.
establish	When something is set up or organised.
exclude	When someone is not allowed to join in with something or deliberately not choosing something.
significant	Important enough to be worthy of attention .

Example of a food chain

An Example of a Food Chain

The arrows in a food chain show the flow of energy.

