

# Science— Bees

## Key Vocabulary

brood	The eggs and larvae protected in the lower part of the hive.
colony	The collective noun for a group of honey bees that live together in a hive.
drone	A drone is a male honey bee.
hive	The place in which the colony of bees live.
honey	The sweet, sticky fluid made by the bees for food.
honey bee	A type of bee that collects nectar and pollen, makes wax and honey, and lives in large groups.
nectar	The sweet liquid collected from flowers to turn into honey.
pollen	The fine powder collected from flowers and is the protein food that is necessary for the development of the baby bees.
protective clothing	The clothing worn to prevent bee stings while managing the hive.
queen bee	The female bee that lays eggs. She is larger than the other bees.
royal jelly	The special food given to larvae that the colony wants to raise as a queen bee.
worker bee	A female bee that cannot reproduce.

## Key Facts

There are the worker bees, the drones, and the queen.

The worker bees are female and they perform different tasks according to their age. For the first few weeks of their lives they stay and do work in the hive. They keep the hive clean, tend to and feed the larvae, and take care of the queen. After that, they leave the hive to forage and bring back nectar and pollen.

The drones are the male bees and their only job is to mate with the queen. They are larger than the worker bees and their fat bodies help to keep the hive warm. When they are no longer needed, they may be forced out of the hive to die.

The queen also has only one job and that is to breed. She stays in the hive and is cared for by her daughters and she is the only female in the colony that breeds.

There are six basic components to a beehive. The bottom board, the brood box, the queen excluder, the supers, the frames and the cover.

The frames are usually made from wood and have a foundation of wax in the middle. The bees use the base as a model to build their own wax onto.

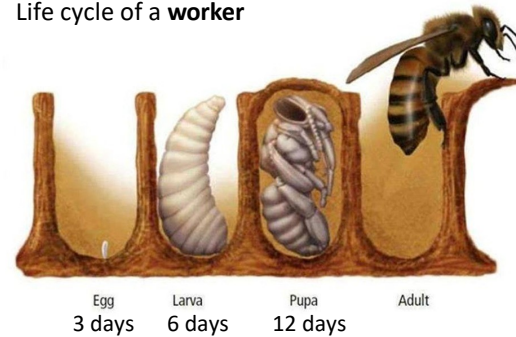
The bees build hexagonal shapes with wax for the queen to lay her eggs in. These eggs hatch into larvae which then become the bees.

## Diagrams

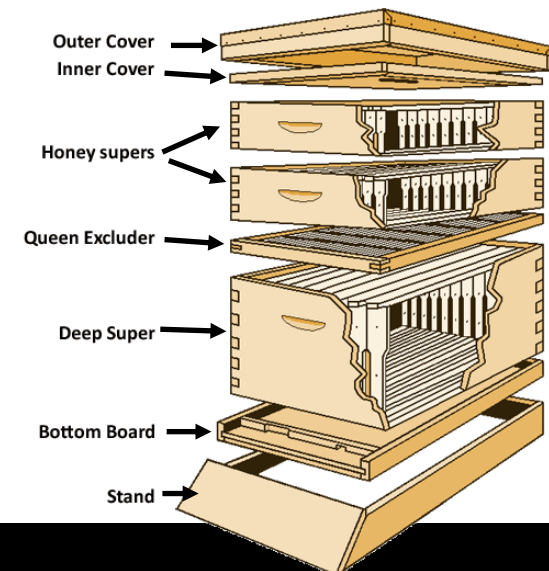
Life cycle of a **queen**



Life cycle of a **worker**



Life cycle of a **drone**



### Tier 2 Vocabulary

contribute	you say or do things to help to make something work.
cooperate	work together towards the same end
criteria	A list of things that that need to be done.
exclude	When someone is not allowed to join in with something or deliberately not choosing something.
inspect	to look at every part of something carefully in order to find out about it or check that it is all right.
investigate	To find out what something is or why something happens by testing out ideas.
summary	Giving the main points of a situation or a text.