

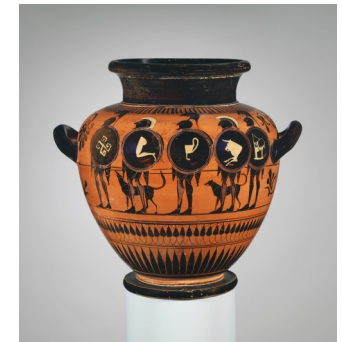
Art— Pottery

Key Vocabulary

ceramic	When clay is fired it is called ceramic.
cross hatch	When 2 pieces of clay are added together, each piece needs to be scored to help them join together properly.
earthenware	A type of clay used to make pots that are used inside or for decoration.
kiln	The large oven that clay needs to be put into turn it into ceramic. The temperature gets up to about 1200 degrees celsius.
pull	When you use your fingers to move the clay upwards on a wheel to make the pot taller and thinner.
slip	The clay glue that is used to join 2 pieces of clay together.
throw	When you put the clay onto a wheel or a table, it needs to been thrown on to knock air out and make it stick to the surface.



There are many different shapes of Greek pot.



Key Facts

Pots can be made by adding sausages of clay on top of each other to form a coil pot or by **throwing** the clay on a moving wheel.

People have been making clay pots for thousands of years. Each civilisation has its own style of clay pot.

Greek pots were used as vases, bottles, to cook food in, to hold creams and perfumes and just for decoration.

Greek pots were usually glazed in orange and black and often had scenes from myths on them.

Different types of clay are used for different jobs. Earthenware is usually used for decorative items or for pots that will be inside but not heated. Stoneware clay is used for things that need to be outside or things that need to be heated– like oven dishes.

